

# Welcome to Year 2!

**Mrs Harvey**  
**Sapphire Class**



**Miss Berry**  
**Emerald Class**



We are also supported by Mrs Webb, Mrs Botting, Mrs Heath, Mrs Hulland and Mrs Petre.

# Presentation Overview

- Year 2 curriculum overview
- Forest School and PE
- Marking strategies
- Assessments
- Reading
- Phonics and Spelling
- Homework
- What to bring to school



# Year 2 Overview



## Year 2 Long Term Plan 2024 - 2025

Subject	Autumn 1	Autumn 2	Spring 1	Spring 2	Summer 1	Summer 2
<b>Trip</b>		Church Visit			Legoland	
<b>Hook/Experiences</b>	Castle Day Forest School	Christmas Performance		Samba Workshop		Adventure Day Year 2 Graduation
<b>Key Texts</b>	Sir Charlie Stinky Socks and The Really Big Adventure	The Snowman – Raymond Briggs Autumn Fires – Robert Louis Stevenson	The Great Kapok Tree Meerkat Mail	The Egg		Horrid Henry
<b>English</b>	Instructions Character Description - Sir Charlie Stinky Socks Narrative – Sir Charlie Stinky Socks Information writing	Poem Report – Great Fire of London Narrative – The Snowman	Fictional recount (postcard) - Meerkat Mail Narrative – The Great Kapok Tree Information Writing - Rainforests	Character Description Narrative – The Egg Instructions - How to catch a dragon	Non- Chronological report – minibeasts Personal Recount - Trip	Poem Character Description – Horrid Henry Letter – Florence Nightingale
<b>Maths</b> (based off White Rose)	Place Value Addition and Subtraction	Addition and Subtraction 2D and 3D shape	Money Multiplication and Division	Length and Height Mass Capacity and Temperature	Fractions Time	Statistics Position and Direction
<b>Science</b>	Animals including Humans Living Things and their Habitats	Uses of Everyday Materials	Living Things and their Habitats	Uses of Everyday Materials Inventors Recycling	Animals including humans Living Things and their Habitats	Plants
<b>History</b>	Castles	Guy Fawkes. The Great Fire of London				Florence Nightingale Mary Seacole
<b>Geography</b>			Naming and Locating the Continents/Oceans Geographical features	A study of a contrasting country - Brazil Comparing two major cities	Mapping Skills	

# Year 2 Overview



<b>Art</b>		Artist – Clarice Cliff Clay work Christmas/Seasonal Art	Artists - Megan Coyle Collage - Animal /Habitats Inspired collage		Artist – Maria Sibylla Merian Sketching & Observational Drawing	
<b>DT</b>	Design and make project – castles with mechanisms (levers/hinges, winders, sliders)			Design and make project – a carnival mask using textiles		Principles of a healthy varied diet Where food comes from? Cooking - healthy wrap
<b>Music</b> (Get Set 4 Music)	Folk Songs	Christmas Songs	Oceans	Four Seasons	Great Fire of London	Toys
<b>Computing</b> (Kapow)	Computing systems and networks 1: What is a computer? Online Safety	Programming 1: Algorithms and debugging Online Safety	Computing systems and networks 2: Word processing Online Safety	Programming 2: Scratch Jr Online Safety	Creating media: Stop motion Online Safety	Data handling: International Space Station Online Safety
<b>RE</b> (Surrey Agreed Syllabus for RE) 23-28	Christianity What is God like for Christians?	Christianity Why is giving important to Christians?	Judaism Why do Jewish families celebrate the gift of Shabbat?	Christianity Why do Christians call Jesus 'Saviour'?	Judaism What is the Torah and why is it important to Jewish families?	Thematic Unit Is giving better than receiving?
<b>PE</b> (Get Set 4 Music)	Gymnastics Fundamentals	Yoga Ball Skills	Dance Fitness	Sending & receiving Target Games	Athletics/Sports Day Invasion	Team Building Net & Wall
<b>P SHE</b> (Scarf)	Me and my relationships	Valuing difference	Keeping Safe	Rights and respect	Being my best	Growing and changing

# Forest School and PE

## **Tuesday - Forest School with Mrs Reid**

Please send your child to school wearing their school uniform on top and dark coloured trousers or leggings on the days advised.

## **Monday – PE**

Please send your child to school wearing their PE kit and trainers. No earrings are allowed, nor can they be covered.

## **Thursday – Playball**

Please send your child to school wearing their PE kit and trainers. No earrings are allowed, nor can they be covered.



# Marking Strategies

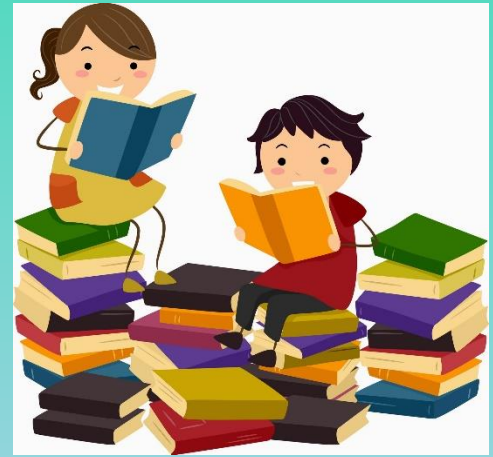
- Green and Gold
- Highlighting
- Verbal feedback
- Reflecting and commenting
- Purple Perfecting Pencils
- Self-assessment
- Peer assessment

# Assessments

- Teacher assessments will build up a picture of ability throughout the year.
- In the summer term the children will be assessed against a national framework for English reading, English writing, mathematics and science. They must be secure in every strand to achieve the expected standard for each subject.
- Teacher assessments will be reported to parents at the end of summer term in your child's report.
- Any child who did not achieve the expected standard for phonics in Year 1 will have the opportunity to sit the phonics check again in Year 2.

# Reading

- We read every day, all the time
- Weekly guided reading
- Independent reading activities
- Individual reading
- Individual intervention (where appropriate)
- Whole class end of day story or text
- We encourage the children to change their own reading books as often as required.



# Home Reading

- We encourage the children to choose their own reading books.
- Please record your comments in the yellow home reading diaries. In Year 2 we have a greater focus on comprehension skills. Please encourage your child to answer questions about what they have read, make predictions based on what they have read so far, discuss the meaning of new vocabulary and retell the story.
- If your child has read at home 3 times in a week they will earn a gold star.
- You will also have a log in for Oxford Owl where you can find online books at your child's reading level.

# Homework

Homework will be handed out every Thursday and should be returned on the following Tuesday. Your child will generally have a piece of optional maths homework based on learning objectives for the week and an English piece of homework usually spelling and handwriting. This is an opportunity for your child to practise what they have been learning in class this week.

We have occasional long term projects such as researching a topic of interest or making a model.

# What to bring to school

- Weather appropriate clothing – as British weather can be changeable; we always recommend bringing a coat. In summer, please send your child to school with a hat.
- A named water bottle containing water.
- A named book bag. Please do not send your child in with a rucksack as space in the cloakroom is limited. In addition, we have found that books tend to get damaged in the rucksacks.
- You do not need to provide any additional resources.



**Thank you for listening. We look forward to working in partnership with you and your children.**