

Welcome to The Infant Informative

Friday 26th January 2024

Issue 18

Today, the children were extremely lucky to have a theatre company in performing Jack & The Beanstalk. It was brilliant, the children loved every second - best of all, it was FREE! A local school cancelled last minute so the company asked if we would like the performance instead - YES PLEASE! Ask your child about the show, I am sure they will tell you all about it.

On Wednesday the whole school practised a 'lockdown drill'. This involved staff locking doors, closing windows and blinds, turning off lights and children huddling in an area of the classroom. I know this might sound scary, but we have been prepping the children for ages with this. They all did very well and all understood that this was not real. Nursery thought it was a big game of hide-and-seek! More detailed information about this drill was sent to parents by ParentMail on Wednesday.

Has your child been vaccinated for measles? There has been a worrying outbreak in some areas of the country, find out more here: [click here](#)

On Monday, we welcomed in the NHS Wheeze Clinic - thank you to those who attended. We were happy to receive really positive feedback about the session.

Last week I mentioned that three charities sent us letters to thank you for your donations over the Christmas period. I referenced this, but accidentally did not include the letters - I have now, you'll see them below... promise!

Have a great weekend, Mr O'Shea :)

We have vacancies,
[click here](#)

GOLDEN LEAVES

Class name	Child's name	Comment
Diamond	Isaac	For being ready for learning and being busy during activities.
Ruby	Alice	For always following our school rules of ready, respectful and safe.
Topaz	Jaxon	For being respectful and trying his best in every lesson!
Amethyst	Mirha	For always being ready to learn.
Emerald	Antiopi	Great enthusiasm for learning about rainforests.
Sapphire	Summer	For fantastic effort in her maths.

Not if, when. A child will be hurt if our driving and parking around the school does not improve.

Dear Mr O'Shea,

[Child's name] was very nearly hit by a car this morning (25/01/24) on our way into school.

[Child's name] was on the pavement, not next to the kerb, but was almost hit by someone turning around on Crawley Ride. The [child] is small so I honestly think the driver didn't see them, but because the driver mounted the kerb when reversing, it could have been much worse than the horrible shock we all had.

Thank you, [parent's name]



A message from our Assistant Headteacher - Miss Saunders

This week's recommended read is *We're going to find the Monster* by Malorie Blackman for no other reason that it is a fun and enjoyable story about family which has been a popular choice in my household since it was gifted at Christmas - I hope it becomes popular in your homes too!



TRICK BOX

We use Trick Box everyday at school. It teaches children to regulate their own emotions and become their own problem solvers. We have a new 'trick' every two weeks for Reception and KS1 children. Nursery have similar 'habits' to learn too. Press the Trick Box logo to the left, to navigate to our website with all of the information you will need to practice these tricks at home too.

Join us



www.crawleyridge.co.uk

DIARY DATES

- Safer Internet Day - Tuesday 6th February
- Parents' Evening - Tuesday 6th February @ 15:30 - 18:00 - Bookings go live on ParentMail on Tuesday
- Parents' Evening - Thursday 8th February @ 16:30 - 19:30 - Bookings go live on ParentMail on Tuesday
- Last day of Spring 1 term - Friday 9th February @ 15:00
- Year 2 Diorama viewing with parents - Tuesday 20th February @ 14:30
- Reception National Child Measurement Programme - Wednesday 21st February
- PTA Bags2School - Friday 23rd Feb
- PTA Break the Rules Day - Thursday 29th February
- World Book Day - Thursday 7th March
- PTA Mothering tea afternoon - Friday 8th March from 15:00
- Science Week - W/B Monday 11th March
- Year 1 School Trip - Wednesday 13th March - now 'live' on ParentMail
- Class group photos - Tuesday 19th March



This week in early years, we have...

NUR

This week began with finishing our focus on **The Tiger Who Came to Tea**. We enjoyed retelling and sequencing the story, creating tiger models out of junk modelling and counting tigers.

We have moved on to our next book, **Postman Bear**. The bear delivers invitations to his birthday party so of course we had to throw the bear a birthday party here! We enjoyed making vanilla cupcakes and later re-enacting our baking experience by making playdough cakes too. We have even drawn birthday cards and party invitations!



REC

What an exciting week we have had. Our story of the week has been **Supertato**, the children have completely immersed themselves and been so creative.

We have had two new sounds this week; ai and ee – we have painted rainbows, made paper chains, put cotton wool on sheep and put bees on our knees!

Our maths this week has been looking at doubles and adding two groups together.

In drawing club this week we have created our own superhero vegetable, a new villain and a good vs evil sorting machine! Our words have been: nemesis, heroic, courageous, quest, shrieked, summoned, obstruct and vanquish!

We have loved seeing what mischief evil pea has got up to around our class. We have made our own Supertato, evil pea traps, dressed up as superheroes, learnt a superhero song, made wanted posters, our own superhero badges, masks and completed superhero challenges.



Join us

[http://](http://www.crawleyridge.co.uk)

www.crawleyridge.co.uk



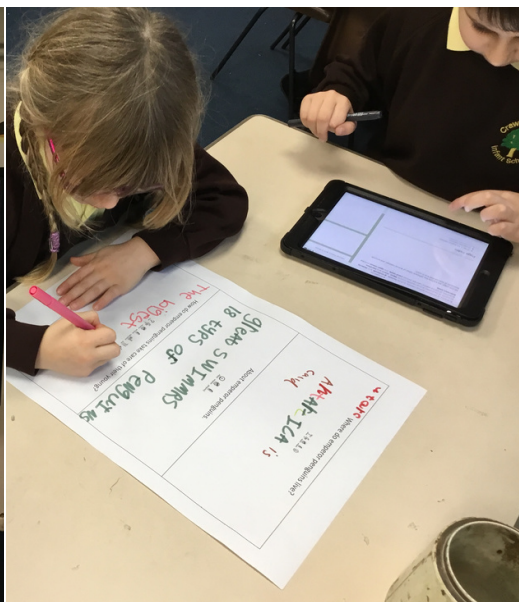
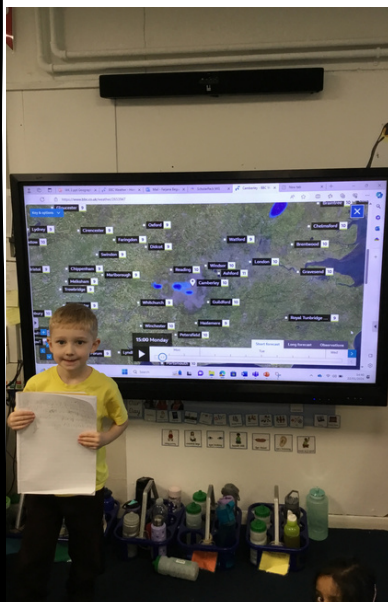


This week in KS1 we have...

YEAR 1

This week we wrapped up our Antarctic adventures by writing a fact file about emperor penguins. The children used alliteration and adjectives confidently to produce a published article which we turned into a class book. In maths the children have linked number bonds of ten to number bonds of 20, we have worked very hard to ensure we are writing our 'teen' numbers and not our 'ty' numbers (15/50). In Art we have started looking at a very familiar illustrator, Axel Scheffler, and how he sketches the portraits in his pictures. We became weather reporters in Geography which we thoroughly enjoyed. Science we have been looking into the properties of materials using language such as, rough, bendy, smooth. All in all, another extremely busy week in Year 1.

Please ensure that no earrings or watches are worn on PE days.



YEAR 2

This week we have created information texts about the Amazon Rainforest. We have included lots of fascinating facts – they are super! In maths we have begun learning about multiplication and division through recognising equal groups and repeated addition. In PE, we mirrored each other to create a mirror image dance. In geography we have identified features as human and physical. We have continued our collages of rainforest animals in art, inspired by Megan Coyle. In science we have used secondary sources to answer questions about how animals are adapted to suit their environments.



Join us

[http://](http://www.crawleyridge.co.uk)

www.crawleyridge.co.uk



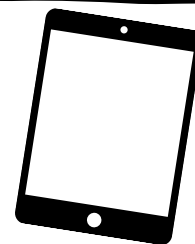


PTA



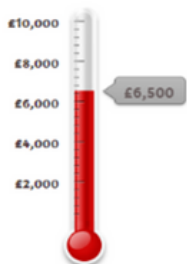
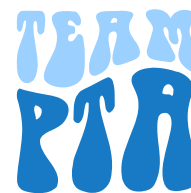
New email address

We have a new PTA email address - please use pta@cri.tamat.org.uk for any email communications



Pre-loved uniform

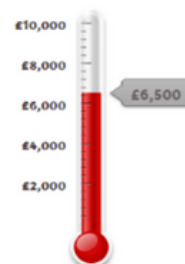
We are working hard to get this up and running online. Please bear with us for a couple of weeks of pre-loved uniform not being available.



Upcoming fundraisers

23rd February - Bags2School useable textiles donations

29th February - Break the rules day, more details coming soon



Clubs @ CRI



Spanish Club, Wednesday Lunchtimes, 12.30-1.00pm

11 classes, Spring term, £55

Wednesday 10th January – Wednesday 27th March

Open to all KS1 pupils. Complete beginners welcome!

Click HERE to book!

Call 07548 906895

Email sara@bilinguasing.com

Monday	Tuesday	Wednesday	Thursday	Friday
Playball Year R, 1 & 2 3pm - 3.45pm	Playball Year R, 1 & 2 3pm - 3.45pm	Bilingua Sing Year 1 & 2 12.30pm – 1pm	Ultimate Coaching Year R Football 3pm - 4pm	Ultimate Coaching Year 1 & 2 Football 3pm - 4.15pm
Jam Coding Year 1 & 2 3pm – 4pm		Hotsteppers Dance Year R, 1 & 2 3pm - 3.45pm	Boogie Pumps Drama Year R, 1 & 2 3pm – 4pm	Genie Lab Year R, 1 & 2 3pm – 4pm
		Playball Year R & 1 3pm - 3.45pm		

Join us



www.crawleyridge.co.uk





Dear

Frimley Health Charity - Donation receipt

On behalf of Frimley Health Charity, I would like to thank you so much supporting. Whether you've ran, cycled, parachuted or held a cake sale, all of your hard work has paid off and the funds you have raised will be put to work quickly. We, as an NHS charity, rely on donations to fund our work and everything we do is only possible thanks to the generosity and support of people like you. From specialist services to pioneering research, every donation helps to support our incredible NHS staff at our hospitals and enhance the level of care we provide to thousands of patients and their families every year.

Thanks to your donation we can improve patients' lives by buying extra equipment, improving the environment in which care is given and investing in research as well as aiding the mental wellbeing of our NHS staff working when they need it most. That's why we are grateful for the huge kindness of people like you, which helps our hospitals offer a level of care beyond that which the NHS alone can provide.

We'd love you to continue your fantastic support, be that signing up to our newsletter, joining our lottery, or even taking part in another one of our fundraising events, we have lots of different ways you can support your local hospital. Please take a few minutes to look through our website and see how you can help us realise our vision of improving patients' lives, supporting our NHS staff, and building a better community.

For more information about the impact your donations are making or about us as a charity please visit frimleyhealthcharity.org.

Once again, a sincere thanks for your support.

Yours sincerely,

Andrew House

Charity Director

Frimley Health Charity

Please find confirmation of your donation below:

Donation amount: £198

SURREY HEATH
MUSEUM AND HERITAGE SERVICES

WHERE PAST TIME MEETS PLAY TIME

EDUCATION AT SURREY HEATH MUSEUM

A NEW workshop for British Science Week - (8th to 17th March)

Workshop is running the whole month of March

Motocross 100

Surrey Heath's spring exhibition celebrates the 100th anniversary of motocross. This workshop explains the science of motocross from it's birth place, here in Camberley. A fun, interactive session that blends the history of motocross with the science of riding a bike. Whole class workshop, including, physics of motion, bike dynamics, the body when riding, physics of jumps and much more! www.britishteachersweek.org

MOTOCROSS 100
CELEBRATING THE BIRTH OF MOTOCROSS
MARCH 2014, CAMBERLEY

Led by our learning team, in your classroom. 60 minutes and £44 per session.
Museum based workshop free of charge
Contact the museum for more information and how to book:
Surrey Heath Museum, 33 Obelisk Way, The Square, Camberley, GU15 3SG
01276 23771
Kathy.joice@surreyheath.gov.uk
e-voice.org.uk/surreyheathmuseum
Great Place • Great Community • Great Future



Thank you for your donation

Just to confirm, your donation has been processed and sent direct to your charity.

A message from your Charity:

Thank you for helping us to make a difference.

Team Children's Hospital Pyjamas

Your Donation Summary:

Your donation to: Children's Hospital Pyjama's

Your donation amount: £198.00

Your donation reference:

Believe in children
Barnardo's

Take my hand

When children across the UK need help, you'll be there for them

Thank you for your donation of £198.00 to **Barnardo's**.

Your support is helping our project workers change childhoods across the UK.

Whatever it takes, however we're needed, your gift will be put to work to ensure children and young people are protected, supported and cared for. Thank you.

Details of your gift

Your name:

Your gift: £198.00

Your transaction code:

Your address:

Crawley Ridge Infant School

Camberley

GU15 2AJ

GB

Join us

[http://](http://www.crawleyridge.co.uk)

www.crawleyridge.co.uk





You might be interested in...



Family Food, Fun & Fitness

Yateley Industries, Mill Lane, GU46 7TF
[Wednesday 28th February 10-11.30am]

Free session exploring:

- Portion sizes
- Cooking from scratch & simple recipes
- New ideas to make mealtimes a family activity
- Information on food types and hidden sugar
- Importance of being active as a family



Visit our website (scan the QR code opposite) or email us at:
hhf@barnardos.org.uk
www.hampshirehealthyfamilies.org.uk



© Copyright 2023 Barnardo's (Reg. Charity Nos. 216250 & SC037606)



Children and Family Health Surrey has launched a new webpage to provide winter safety advice to families including tips about road crossing and being seen in the dark, cycling, playing in the snow and keeping warm.

The advice includes:

- Remind older children to put away their phones and take out any earphones when crossing roads.
- Get your child into the habit of wearing their helmet and if you cycle as a family, remember to wear yours too. It is a legal requirement to have lights and reflectors on bikes when you are out between sunset and sunrise.
- When sledging in the snow choose a slope that is not too steep, make sure it is free of obstacles and does not end near a road, body of water or solid objects such as trees, fences and walls.
- Babies lose heat though their heads so remove hats or hoods when indoors, in a shopping centre or in a car, and remove all outdoor clothing when indoors to avoid overheating.



Open from
9th Jan
2024

OPEN TUESDAY, WEDNESDAY AND FRIDAY
BETWEEN 10AM-2PM



Lewistennis

WINTER 2024 TENNIS CAMPS

February 12/13/14

7 - 12 years • 9.00am - 12.00pm

12 - 17 years • 12.00pm - 3.00pm

£24 per day or £60 when you book for all 3 days!

All equipment provided

Book via the Frimley Tennis Club Clubspark website or contact Head Coach, Lewis Sullivan T: 07748 794 753 or E: lewis@lewistennis.net



Frimley Tennis Club • Watchetts Recreation Ground • Park Road • Camberley • GU15 2SR

Join us



www.crawleyridge.co.uk

