

Welcome to Year 2!

Miss McLoughlin
Sapphire Class



Miss Berry
Emerald Class



We are also supported by Mrs Webb, Miss Murrey and Mrs Arnold.

Presentation Overview

- Autumn term curriculum
- Forest School and PE
- Marking strategies
- Assessments
- Reading
- Phonics and Spelling
- Homework
- What to bring to school



Core Subjects - Autumn

Maths

- Place value
- Addition and subtraction of 2 digit numbers
- Number bonds to 10, 20 and 100
- Missing number problems
- 2D and 3D shape

Science

- Animals including Humans
- Materials – Properties of materials



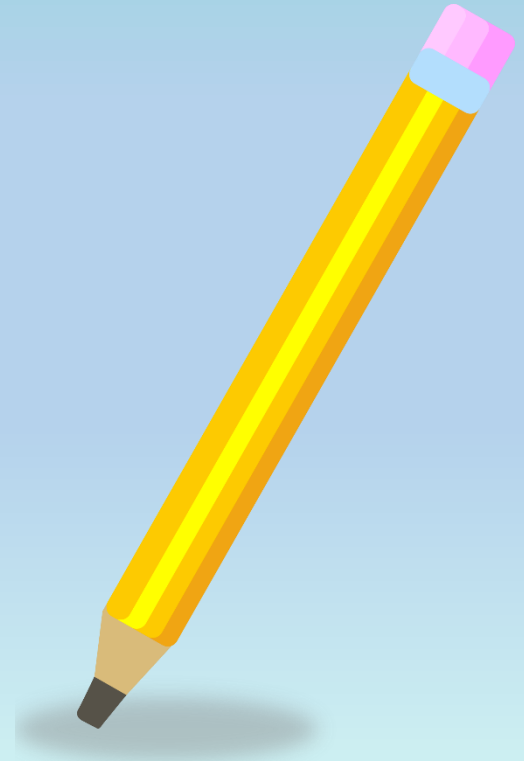
Core Subjects - Autumn

Spelling and Grammar

- Nouns, verbs, adverbs and adjectives
- Different sentence types – commands, statements, questions
- Conjunctions
- Different types of punctuation
- Past and present tense

Writing

- To write factual recount
- To write a narrative
- To write a poem.



Year 2 Foundation Subjects - Autumn

History

- Early history – Castles
- Guy Fawkes and The Great Fire of London

Art

- Colour, landscape and perspective
- Clarice Cliff
- Christmas and seasonal Art

PE

- Yoga
- Gymnastics

Music

- Exploring tempo and pulse
- Singing tunefully

.

Design Technology

- Planning and making castles using mechanisms

Computing

- Online Safety
- What a computer is
- Algorithms and debugging

PSHE/RSE

- Me and my Relationships
- Valuing Differences
- Trickbox

Religious Education

- Why do Jewish families celebrate the gift of shabbat?
- Why is giving important to Christians?

Forest School and PE

Tuesday - Mrs Reid: Forest School

Please send your child to school wearing their school uniform on top and dark coloured trousers or leggings on the days advised.

Tuesday – PE

Please send your child to school wearing their PE kit and trainers. No earrings are allowed.

Wednesday - Playball

Please send your child to school wearing their PE kit and trainers. No earrings are allowed.



Marking Strategies

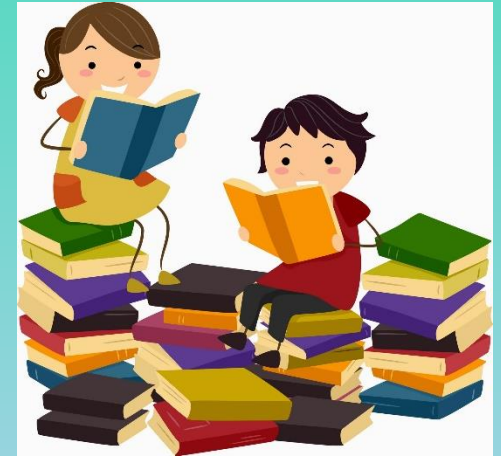
- Green and Gold
- Highlighting
- Verbal feedback
- Reflecting and commenting
- Purple Perfecting Pencils
- Self assessment
- Peer assessment

Assessments

- Teacher assessments will build up a picture of ability throughout the year.
- In the summer term the children will be assessed against a national framework for English reading, English writing, mathematics and science. They must be secure in every strand to achieve the expected standard for each subject.
- Teacher assessments will be reported to parents at the end of summer term in your child's report.
- Any child who did not achieve the expected standard for phonics in Year 1 will have the opportunity to sit the phonics check again in Year 2.

Reading

- We read every day, all the time
- Weekly guided reading
- Independent reading activities
- Individual reading
- Individual intervention (where appropriate)
- We encourage the children to change their own reading books as often as required.
- We encourage the children to read at home with you.
Please write a brief comment in the reading diary when your child has read at home.
- If your child has read at home 3 times in a week they will earn a gold star.



Homework

Homework will be handed out every Friday and should be returned on the following Tuesday. Your child will generally have a piece of maths home work and an English piece of homework. These will be based on learning objectives for the week. This is an opportunity for your child to practise what they have been learning in class this week.

We have occasional long term projects such as researching a topic of interest or making a model.

Reading

Please record your comments in the green home reading diaries. In Year 2 we have a greater focus on comprehension skills. Please encourage your child to answer questions about what they have read, make predictions based on what they have read so far, discuss the meaning of new vocabulary and retell the story. You will also have a log in for Oxford Owl where you can find online books at your child's reading level.

What to bring to school

- Weather appropriate clothing – as British weather can be changeable we always recommend bringing a coat. In summer please send your child to school with a hat.
- A named water bottle containing water.
- A named book bag. Please do not send your child in with a rucksack as space in the cloakroom is limited.
- You do not need to provide any additional resources.



**Thank you for listening. We look forward
to working in partnership with you and
your children.**