



The Infant Informative



Friday 4th February 2022

Issue 19

Pic of the week



- Reception used their imaginations and transported themselves to China this week - this was to celebrate Chinese New Year. They made their own noodle meals, made flags representing China, created Chinese lanterns and spoke about Chinese traditions. In phonics the children learnt the sound 'qu' like qu-a-ck and in Maths they put their weight measuring skills to the test whilst weighing out their ingredients for noodles.
- This week the year 1s have been writing using adjectives to describe clothes. They loved listening to the story of 'Little Brown Monkey' who wore lots of different clothes. They then had to think of their own clothes to describe and then retell the story with all the adjectives. They loved it! They have found out this week about deserts and the animals that live there discussing how they survive in the heat with little water.
- Year 2 have been investigating different ways of collecting, recording and analysing data this week. We have used tally charts, pictograms and block diagrams in Maths and in Science we created a Venn diagram to record data about different animals' diet and eating habits. The children have been inspired by and have re-told the story of "The Great Kapok Tree" by Lynne Cherry. The tale promotes a reminder to us all to take care of our world, in particular the rainforests, and the story is told from the point of view of the animals who live there. Our study of habitats has led to an exploration of physical and human features in Geography, and in Art we have applied our techniques in collage to create landscapes and habitats. In Computing the children have been learning some key messages about staying safe when online, and we will follow this up next week during Internet Safety Week. The children are looking forward to having the opportunity to share their books with you and show you all the hard work they have been doing this year.

Week nineteen

19

The children in KS1 continue to impress with how much British Sign Language they have learnt. We have now learnt 25 signs including greetings, animals and colours. I have included help sheets on this newsletter to continue practicing at home. Well done children, you are learning another language that is used by over 150,000 people in the UK.

In another assembly we learnt about our queen and the very special event that will take place this weekend. This Sunday will mark 70 years to the day, that Queen Elizabeth II was crowned queen of the United Kingdom and 14 other Commonwealth realms. This will make her the longest serving monarch in our history - an unbelievable achievement. We spoke about her father, the age at which she took to the throne and the celebrations that will take place in the summer. As a school we will hold our own celebrations. More information to follow.

Next week is Children's Mental Health week, assemblies will teach the children the importance of mental health and discussing their thoughts and feelings. In the same week we will be learning about staying safe online as we mark Safer Internet Day. All children will have computing workshops with their teachers and an assembly from me (as I lead on computing in the school). You will notice the building works taking place at school. The new fencing and gates look sleek and much improved. We hope the works will be finished by next week. Please continue to use the KS1 Playground gate only. Have a lovely weekend.

Bosha
Mr O'Shea



DIARY DATES

PTA Valentines gifts on the playground 10/02
Parent consultations - phone calls w/b 7/02
Last day of this half term 10/02
INSET Day for staff (children do not attend) 11/02

Join us



www.crawleyridge.co.uk



COMING
SOON

We have learnt these BSL signs



HELLO



GOOD



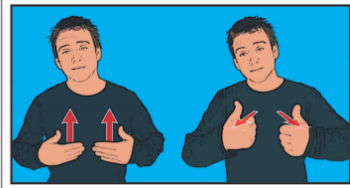
MORNING



AFTERNOON



NIGHT



HOW ARE YOU?



THANKS/PLEASE



SORRY



GOODBYE



bear



bird



butterfly



cat



chicken



cow



deer



dog



duck



elephant



fish



horse



lion



monkey



pig

pink



orange



red



yellow



brown



green



blue



purple





join in...

Following on from our successful Book Fair last term and to celebrate and encourage a lifelong love of reading at home and school, we have partnered with Katie Slingerland from Usborne Books again to run a sponsored read in half term. ALL the sponsor money raised will go towards brand new books for our school and in addition to this sponsorship money, Usborne will also donate 60% of the total raised in EXTRA FREE BOOKS to the school. So, for every £600 raised, we will get an extra £360 in FREE Usborne books!

Our target is to raise £1000 in sponsor money, with Usborne donating an additional £600 of books for free. This will give us a total of £1,600 to spend on new books and resources for the children.

Please help us to enhance our reading resources for pupils by encouraging your child to spend a small amount of time each day in half term either reading to themselves, to others, or being read to. They can read books, comics, magazines, newspapers, menus, websites, recipes, poems, leaflets, instructions – anything with words!

* Every child who raises sponsorship of £20 or more will receive a prize! *

If you are able to support our sponsored read, please use the sponsorship form and reading log for your child if they wish to use it to record their reading. These were sent to you by ParentMail yesterday - hard copies will also be sent home in book bags. Sponsorship money can be paid by cash, cheque or bank transfer and is due in by Monday 28th February.

We look forward to having lots more books for your child to read, share and enjoy.

Best regards

School Admin Team



PTA

Amazon Smile

You can use your current amazon account and shop as normal, but before you 'buy now' simply switch onto <https://smile.amazon.co.uk> or you can shop direct through AmazonSmile.

It is really easy to register;

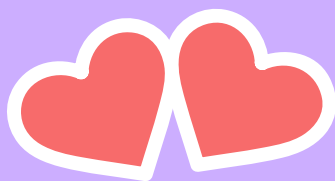
Here's how to sign up for AmazonSmile

1. Visit smile.amazon.co.uk
2. Sign in with your amazon.co.uk credentials.
3. Choose a charitable organisation to receive donations, or search for the charity of your choice.
4. Select your charity. The Crawley Ridge Infant School Association

The Giving Machine

Register with The Giving Machine, and we get a small percentage when you buy from well known brands online. The Giving Machine works with companies like John Lewis, Look Fantastic, M&S, Etsy, Argos, H&M, NotOnTheHighStreet and more.

Just go here to join as a Giver: <https://shopandgive.thegivingmachine.co.uk/find-a-cause/> and in the search box put Crawley Ridge Infant School.



On Thursday at pick up, the PTA will be in the playground selling Valentine's heart biscuits. It'll be cash only, so please bring your change.

Join us



www.crawleyridge.co.uk



COMING SOON



important information...

From Monday 31st January we are having new electric gates installed at our school. To allow for this work to be carried out efficiently, entrance and exit to our site will change for the next two weeks. All parents will need to use the KS1 single gate as pictured below. All other entrance/exit points will be closed. We know this will cause congestion. To alleviate this, children in Year 2 will enter their classrooms through the double white doors, into the large main hall and then into their classrooms through the internal doors. This will mean that only Reception parents will need to walk their way around the building to the reception playground. Year one will be as normal. Please take your time and be patient, registers will not close until all parents have exited the site, so do not rush.



After the February half term, pedestrian entrance and exits will be different. We will give you more information about this before we return to school.

Join us



www.crawleyridge.co.uk



**COMING
SOON**



notices and reminders...

Don't forget, next week (regardless of when your phone appointment is) you can come and look through your child's school books. This will be in the nursery area. During the morning sessions, registration will not close for your child's class until 09:00 am. For afternoon sessions, you may pick your child up from their class from 14:45 pm. This will allow for your child to accompany you whilst you look through their work with them. All adults must wear masks when in the building, unless exempt.

Please arrive at any time during the allocated time slot. Books will take approximately 5 minutes to look through. Then take your child to class (morning) or home (afternoon).

	Tuesday 8 th Feb	Wednesday 9 th Feb	Thursday 10 th Feb
08:30 – 09:00	Topaz	Amythest	Diamond
14:45 – 15:15	Emerald	Sapphire	Ruby

Are you a working parent looking for high quality childcare?

The Graitney Club provides high quality, affordable and reliable before and after school childcare for children aged between 4-11 years who attend Crawley Ridge Junior or Infant Schools. The Club is based at Crawley Ridge Junior School and is linked to the Infants' school by a walking bus.



The team of highly trained staff at

Graitney provide a play centred environment where children feel safe, secure and happy. Activities include cooking, craft, outdoor play, imaginative play and so much more. Please see our Facebook page for some of the things we have been up to recently.



The children are provided with breakfast in the morning and there is a substantial snack in the evening included in the cost.

For more information please call Charmaine on 01276 61144 opt 2, or email graitney@crj.tamjat.org.uk



HELP WANTED

There is an opportunity to collect a lot of free bark which we can use in our forest school. This needs to be collected locally. If anyone has access to a pick up truck or large vehicle and would volunteer to collect some for us, we would really appreciate it. Please contact the office if you think you can help!

Ultimate Coaching Half Term holiday camp

<https://ultimate-coaching.class4kids.co.uk/camp/97>

Ultimate Coaching Inset Day

<https://ultimate-coaching.class4kids.co.uk/camp/91>



Your child should not come into school if they have any of the following symptoms, or feel unwell:



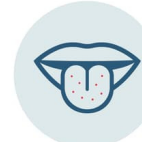
HIGH
TEMPERATURE



NEW
PERSISTENT
COUGH



LOSS OF
SMELL



LOSS OF
TASTE

BOOK A PCR TEST

CLICK HERE

ORDER LATERAL FLOW TESTS

CLICK HERE

Join us



www.crawleyridge.co.uk



COMING
SOON