



# The Infant Informative



With the full support and agreement of the family, I share some terribly sad news. One of our wonderful students lost their father suddenly this week. I know you will all join me in sending your heartfelt sympathies and warm wishes to the family. I know the community of our school will offer their full support as needed in the coming weeks. We hold them in our thoughts during this difficult time.

With love, the CRI team and all families



Join us



[www.crawleyridge.co.uk](http://www.crawleyridge.co.uk)



COMING  
SOON



# The Infant Informative



Friday 28th January 2022

Issue 18

## Pic of the week



Eating vegetable stew and making supertato models



- Reception have had a VERY busy week. You wouldn't believe how much you can do in just 5 days! Their book of the week was 'Supertato'. The week started with the Evil Pea leaving clues around the classroom after he visited without invitation. To find the Evil Pea, the children made wanted posters complete with their own drawings and sentences such as 'get him'. The children have been learning about healthy foods, and even prepared their very own stew. Using their fine motor skills to chop and peel the ingredients. In phonics, they learnt the sound 'y' and in maths they investigated weight, finding things that were heavy and light.
- In Year 1 this week we read and wrote about the story of Handa's Surprise. We enjoyed looking at some real fruit and retold the story using adjectives to describe the animals and fruit. In Maths we have continued adding and subtracting with numbers up to 20. We made lovely, colourful posters about keeping safe and warm in Winter and had fun "building snowmen" in Dance.
- The children in Year 2 have had a very productive week again! In Maths we have continued our exploration of division, this time by sharing numbers of objects. In Science we have explored further how animals are adapted to their own habitats and the children have written a fact file about their favourite rainforest creature. Did you know that sloths are distant cousins of armadillos? We have also completed our collages of rainforest creatures in Art, using a range of papers and techniques, and they look amazing! In Geography we have been learning to recognise the physical and human features of environments. Which physical or human geographical features can you recognise on your way to school each day? Please continue to practise the 2, 5 and 10 times tables – remember, we would like you to know all these facts in any order!

## Week eighteen

A mixed week with some incredible highs and some real lows. This week has shown me, once again, how amazing the staff here at CRI are. They really know how to support one another, even in the toughest circumstances. The children are so lucky to have such a dedicated team of people working with them daily - I am too.

You will see what a busy week we have had just by reading the year group blurbs on the left. Our curriculum is designed to be engaging, creative and most importantly, FUN! Children learn best when they don't feel like they are learning at all.

This week our parent consultations booking system went live. All telephone meetings will be held during the final week of this half term. Please do make sure you have booked your slot to speak with your class teacher. We will also be offering the opportunity for parents and carers to have a look at children's work books. This is detailed on the letter that went out this week.

I have had reports of parents walking dogs just outside of the school and not picking up their dog's mess. This is not only irresponsible and lazy, but also causing considerable damage to scooters, bikes and uniforms.

This week has shown us that life is so precious and fragile. I hope you spend this weekend sharing kindness and love to your families, friends and anyone who needs it. I hope you have a peaceful weekend.

*Bosha*  
Mr O'Shea



**DIARY DATES**  
PTA Valentines gifts on the playground 10/02  
Last day of this half term 10/02  
INSET Day for staff (children do not attend) 11/02

Join us



[www.crawleyridge.co.uk](http://www.crawleyridge.co.uk)



COMING  
SOON





# important information...

**From Monday 31st January we are having new electric gates installed at our school. To allow for this work to be carried out efficiently, entrance and exit to our site will change for the next two weeks. All parents will need to use the KS1 single gate as pictured below. All other entrance/exit points will be closed. We know this will cause congestion. To alleviate this, children in Year 2 will enter their classrooms through the double white doors, into the large main hall and then into their classrooms through the internal doors. This will mean that only Reception parents will need to walk their way around the building to the reception playground. Year one will be as normal. Please take your time and be patient, registers will not close until all parents have exited the site, so do not rush.**



**After the February half term, pedestrian entrance and exits will be different. We will give you more information about this before we return to school.**

**Join us**



[www.crawleyridge.co.uk](http://www.crawleyridge.co.uk)



**COMING  
SOON**



# join in...



HELLO



GOOD



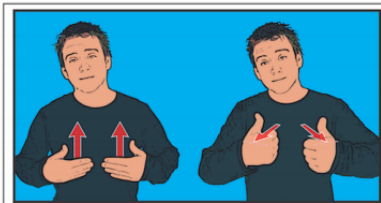
MORNING



AFTERNOON



NIGHT



HOW ARE YOU?



THANKS/PLEASE

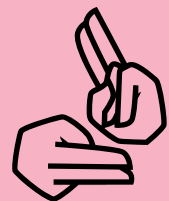


SORRY



GOODBYE

We have learnt all of these greeting signs.



We have learnt over half of these animal signs so far!



bear



bird



butterfly



cat



chicken



cow



deer



dog



duck



elephant



fish



horse



lion



monkey



pig

## PTA

### Amazon Smile

You can use your current amazon account and shop as normal, but before you 'buy now' simply switch onto <https://smile.amazon.co.uk> or you can shop direct through AmazonSmile.

It is really easy to register;

Here's how to sign up for AmazonSmile

1. Visit [smile.amazon.co.uk](https://smile.amazon.co.uk)
2. Sign in with your amazon.co.uk credentials.
3. Choose a charitable organisation to receive donations, or search for the charity of your choice.
4. Select your charity. The Crawley Ridge Infant School Association

### The Giving Machine

Register with The Giving Machine, and we get a small percentage when you buy from well known brands online. The Giving Machine works with companies like John Lewis, Look Fantastic, M&S, Etsy, Argos, H&M, NotOnTheHighStreet and more.

Just go here to join as a Giver: <https://shopandgive.thegivingmachine.co.uk/find-a-cause/> and in the search box put Crawley Ridge Infant School.



### Nearly New Uniform

If you're after some uniform for your child, don't forget we have nearly new uniform available and everything is just £1 each.

Just email Katherine with what you're after at [ktlewis99@gmail.com](mailto:ktlewis99@gmail.com), and she'll let you know what she has.

## Join us



[www.crawleyridge.co.uk](http://www.crawleyridge.co.uk)



## COMING SOON





# notices and reminders...



## Are you a working parent looking for high quality childcare?

The Graitney Club provides high quality, affordable and reliable before and after school childcare for children aged between 4-11 years who attend Crawley Ridge Junior or Infant Schools. The Club is based at Crawley Ridge Junior School and is linked to the Infants' school by a walking bus.



The team of highly trained staff at

Graitney provide a play centred environment where children feel safe, secure and happy. Activities include cooking, craft, outdoor play, imaginative play and so much more. Please see our Facebook page for some of the things we have been up to recently.



The children are provided with breakfast in the morning and there is a substantial snack in the evening included in the cost.

For more information please call Charmaine on 01276 61144 opt 2, or email [graitney@crj.tamlat.org.uk](mailto:graitney@crj.tamlat.org.uk)

## HELP WANTED

There is an opportunity to collect a lot of free bark which we can use in our forest school. This needs to be collected locally. If anyone has access to a pick up truck or large vehicle and would volunteer to collect some for us, we would really appreciate it. Please contact the office if you think you can help!

## Ultimate Coaching Half Term holiday camp

<https://ultimate-coaching.class4kids.co.uk/camp/97>

## Ultimate Coaching Inset Day

<https://ultimate-coaching.class4kids.co.uk/camp/91>

## RSPB Big Garden Bird Watch is 28-30 Jan -

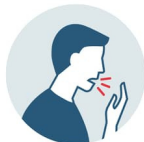
<https://www.rspb.org.uk>  
Families can register to take part and then log the birds they see.



Your child should not come into school if they have any of the following symptoms, or feel unwell:



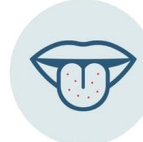
HIGH TEMPERATURE



NEW PERSISTENT COUGH



LOSS OF SMELL



LOSS OF TASTE

## BOOK A PCR TEST

[CLICK HERE](#)

## ORDER LATERAL FLOW TESTS

[CLICK HERE](#)

Join us



[www.crawleyridge.co.uk](http://www.crawleyridge.co.uk)



COMING SOON