



# The Infant Informative



Friday 21st January 2022

Issue 17

## Pic of the week



Year  
1  
Art

- Reception continue with their winter topic. They went on a winter walk to look for signs of winter. They explored media and materials to create their very own bird feeders. In their phonics they focused on their new sounds 'v' and 'w'. In Maths they practised sharing, in time sharing becomes a valuable tool for addition and subtraction.
- Year 1 have continued learning about Polar animals this week with a focus on Polar Bears. They have had fun learning and writing facts, painting Polar Bears and making dens for them out of Duplo and Lego. In PE they continued with dance by being 'Creatures in the Snow'. All the children are really loving our new dance topic. In Maths Year 1 have been focusing on numbers bonds 20. They learnt that the number bonds to 10 can help us make the bonds to 20 eg. If  $7+3=10$  then  $17+3=20$ . In Art over the last few weeks the children have been finding out all about the artist Claude Monet and they have used tissue paper and paint to try to recreate some of his waterlily pictures. This week they have designed their very own garden with a pond which they will collage next week.
- Year 2 have begun to explore Division in Maths. We have looked at how we can divide a number of objects by grouping them, and the children could see how this related to their understanding of multiplication. In Science, we have continued our study of habitats, and how animals have adapted to their particular habitat. In Geography the children have been learning the names and location of the seven continents and 5 oceans on Earth, and we have located areas of the Earth with particular habitats, such as rainforests. This has inspired some factual writing in English lessons as well as some collage in Art. What a busy week, but there has been plenty to inspire the children's interest and we have been impressed by their knowledge of animals and their habitats which they have found from looking at books and from watching natural history programmes on TV at home.

## Week seventeen

17

Thank you to all parents that continue to test their children regularly. Because of this effort, we are finding cases very early before the virus has a chance to spread. This week, we had to 'limit contact' with one of our classes - this went without a hitch and will continue to be reviewed into next week. This would not have been known or possible without testing.

England is slowly moving back to 'Plan A', however, I still strongly encourage parents to wear masks on the school site. Every little helps when it comes to reducing spread in our school. Comparatively, we are in a good position so far this term.

In this week's assembly we spoke about Dr. Martin Luther King Jr, his legacy, his importance and how he changed the world for the better. Although some of the messaging around segregation can seem daunting, the children once again listened and asked/answered questions with respect and thought. These conversations are vital at home, even from an early age.

Children who are at home isolating but feel well, should be completing the online learning that teachers have prepared for them. This learning can be found on our website on the [class page](#). Work should be 'handed in' by emailing the completed work to the dedicated home learning email addresses detailed below.

**Reception:** [homelearningyearr@cri.tamat.org.uk](mailto:homelearningyearr@cri.tamat.org.uk)

**Year 1:** [homelearningyear1@cri.tamat.org.uk](mailto:homelearningyear1@cri.tamat.org.uk)

**Year 2:** [homelearningyear2@cri.tamat.org.uk](mailto:homelearningyear2@cri.tamat.org.uk)



Have a restful weekend.

*Bosha*  
Mr O'Shea



**DIARY DATES**  
PTA Hot chocolate sale after school  
28/01

Join us

[http://](http://www.crawleyridge.co.uk)

[www.crawleyridge.co.uk](http://www.crawleyridge.co.uk)



COMING  
SOON



# notices and reminders...

## HELP WANTED

There is an opportunity to collect a lot of free bark which we can use in our forest school. This needs to be collected locally. If anyone has access to a pickup truck or large vehicle and would volunteer to collect some for us, we would really appreciate it. Please contact the office if you think you can help!

### Are you a working parent looking for high quality childcare?

The Graitney Club provides high quality, affordable and reliable before and after school childcare for children aged between 4-11 years who attend Crawley Ridge Junior or Infant Schools. The Club is based at Crawley Ridge Junior School and is linked to the Infants' school by a walking bus.



The team of highly trained staff at

Graitney provide a play centred environment where children feel safe, secure and happy. Activities include cooking, craft, outdoor play, imaginative play and so much more. Please see our Facebook page for some of the things we have been up to recently.



The children are provided with breakfast in the morning and there is a substantial snack in the evening included in the cost.

For more information please call Charmaine on 01276 61144 opt 2, or email [graitney@crj.tamjat.org.uk](mailto:graitney@crj.tamjat.org.uk)



HELLO



GOOD



MORNING



AFTERNOON



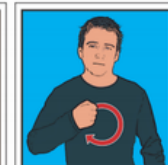
NIGHT



HOW ARE YOU?



THANKS/PLEASE



SORRY



GOODBYE

### Ultimate Coaching Half Term holiday camp

<https://ultimate-coaching.class4kids.co.uk/camp/97>

### Ultimate Coaching Inset Day

<https://ultimate-coaching.class4kids.co.uk/camp/91>

### RSPB Big Garden Bird Watch is 28-30 Jan -

<https://www.rspb.org.uk>

Families can register to take part and then log the birds they see.



Your child should not come into school if they have any of the following symptoms, or feel unwell:



HIGH TEMPERATURE



NEW PERSISTENT COUGH



LOSS OF SMELL



LOSS OF TASTE

### BOOK A PCR TEST

[CLICK HERE](#)

### ORDER LATERAL FLOW TESTS

[CLICK HERE](#)

Join us



[www.crawleyridge.co.uk](http://www.crawleyridge.co.uk)



COMING SOON