



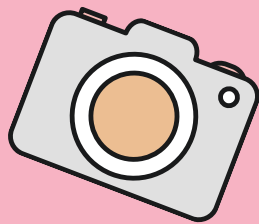
The Infant Informative



Friday 26th November 2021

Issue 11

Pic of the week!



*Reception baking
Gingerbread biscuits*

- This week the key text in Reception has been The Gingerbread Man! The children baked their very own gingerbread biscuits and decorated them too! The naughty gingerbread man left loads of crumbs in the classroom and even tore the last page out of one of our favourite books 'We're going on a bear hunt'. We had to go on a search for the page, winding our way through an obstacle course - but we found it in the end! We have been learning about positional language in maths which really helped with our search.
- In Year 1 the children were able to bring in toys for History that they played with when they were little. They discussed why they were good toys for them as a baby or toddler but not something they might play with now. Linked to their toys topic, the children heard and wrote about the story of Threadbear. In writing we have focussed on full stops, finger spaces and capital letters. Some children have tried to extend their learning using adjectives or connectives. In Maths the children have focused on 2D and 3D shapes completing a shape hunt! In Science they learnt all about hibernation and why animals hibernate during the Winter.
- In Art lessons Year 2 have been looking at the amazing pieces of work that have been created by Clarice Cliff. In Maths we have been learning about money; it's value and the concept of paying for items. At home we recommend children practice role playing using real coins, working out their change and how many of each item they can buy with a set amount. Children also wrote eye witness accounts of The Great Fire of London, inspired by Samuel Pepys diary.

Week eleven

11

I had forgotten the beauty and power of children all singing together in harmony. Out of all the disruption Covid caused schools, not being able to sing was one activity that all teachers and staff so thoroughly missed. Thankfully, singing has resumed in full force as children practise their songs for their Christmas shows. Many parents have expressed how important these shows are to them, so I am going to do everything in my power to enable them to go ahead as planned. As with everything these days, I continue to monitor cases - meaning arrangements will change if required at short notice. The more parents wear masks on site and follow the one way system, the more likely events such as this can go ahead. Similarly, testing yourselves and children regularly and keeping children at home when they have symptoms, all play a massive part in keeping cases low within our school.

Our website has been updated with a Christmas page to keep you up to date with everything we have planned for the children. As mentioned previously, please do check the website and our online calendar to answer your queries before calling the school office. Please follow the one way system at school and wear a face covering if you can. Have a great weekend.

Boshea
Mr O'Shea



DIARY DATES

- Santa visit 08/12
- Virtual Elf visit 09/12
- Year 1 festive sing-a-long morning 09/12 & 10/12



Join us

[http://](http://www.crawleyridge.co.uk)

www.crawleyridge.co.uk



COMING SOON



a little more...

CHRISTMAS AT

CRAWLEY RIDGE INFANTS

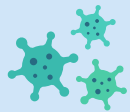


| | | |
|--|--|---|
| WEDNESDAY 8TH DECEMBER Santa Visit Organised by the PTA 13:30 - 14:30 | THURSDAY 9TH DECEMBER Year 1 Festive sing along MORNING Virtual Elf Organised by the PTA AFTERNOON | FRIDAY 10TH DECEMBER Year 1 Festive sing along 09:00 - 09:20 |
| MONDAY 13TH DECEMBER Reception Festive sing along 09:00 - 09:20 | TUESDAY 14TH DECEMBER Reception Festive sing along 09:00 - 09:20 | WEDNESDAY 15TH DECEMBER Year 2 Christmas nativity 09:00 - 09:20 Christmas lunch Supplied by Twinkl |
| THURSDAY 16TH DECEMBER Year 2 Christmas nativity 09:00 - 09:20 | FRIDAY 17TH DECEMBER Craft day Christmas activities & Christmas parties Wear a festive jumper | |



6th-10th Dec

Christmas Post Box open for all year groups



NHS



Your child should not come into school if they have any of the following symptoms:

BOOK A PCR TEST

[CLICK HERE](#)

ORDER LATERAL FLOW TESTS

[CLICK HERE](#)

SPACES AVAILABLE FOR RECEPTION ULTIMATE COACHING SESSIONS AFTER SCHOOL ON MONDAYS

[CLICK HERE](#)



PTA Sponsored Move to Lapland

You should have found a sponsorship form and letter in book bags this week. This is for our challenge to collectively walk, cycle, and/or scooter to Lapland, 1,464 miles away between 17th November and Wednesday 15th December 2021.

All the details are in the letter but in short we have two goals for this:

- 1) To collectively walk/ scooter/ cycle to Lapland
- 2) To raise £4,000 so the school can buy 15 laptops. This will mean each child will have their own laptop during computing lessons, instead of sharing.

If each child travels 8 miles and raises £20 we will achieve our target! (That's just 2 miles per week.)

To keep track of our progress please email LaplandCRIS@outlook.com each Wednesday (24th Nov, 1st, 8th & 15th Dec) with the following:

- Child's name and class
- Number of miles completed to date
- Sponsorship raised to date

There are prizes! To give you an extra incentive, there are prizes available. There will be:

- A weekly prize draw for every child who has logged miles that week.
- A prize for the child that logs the most mileage over the next four weeks
- A class prize for the class that raises the most money throughout the challenge

So, next steps are to start getting sponsorship, and start clocking up the miles. We can't wait to see how the children get on with their miles.

Join us



www.crawleyridge.co.uk



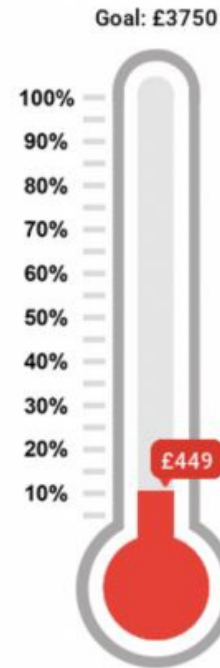
COMING SOON



and finally...

Sponsored Move to Lapland!

Thank you to everyone who has got involved, we're off to a great start but we need everyone to help us reach our target!



This week's winner of 2x Vue Cinema tickets is:
Bonnie (Sapphire) - Congratulations!!

Diamond £120

Week 1 update

Ruby £20

Amethyst £140

£449.80
total

Topaz £20

Sapphire £74.80

Emerald £75

Join us



www.crawleyridge.co.uk



COMING SOON