



The Infant Informative



Friday 5th November 2021

Issue 08

Harvest Festival



THANKYOU

Thank you for all of your kind donations towards our Harvest Festival food collection. We are overwhelmed by the generosity and kindness of our community. The food has been collected by the Camberley Rotary Club who will distribute this food to those in need, on our behalf.

Today, the children were part of an assembly where we spoke about how lucky and fortunate we are to have warm meals everyday. The children were given a small piece of bread to eat so that they could reflect upon families who are not in the same position as us. We spoke about food waste and how we shouldn't be super fussy eaters, when others do not have food at all.

Please continue these thought provoking conversations at home, as it really does build upon your child's level of understanding about life outside of school and our local community.

Week eight

8

I hope all of our families enjoyed their half-term break, the children have settled in extremely quickly and are full of energy! For those who celebrate Diwali, I hope you had a lovely day yesterday.

At all curriculum meetings I mentioned that we were searching for a phonics scheme to implement and embed into our curriculum. After weeks of research, meetings with companies and staff discussions we have now purchased Essential Letters and Sounds. Staff will complete the training for this next week. The scheme is full of amazing resources including an e-library where we will be able to allocate your child books that they read online, alongside their physical books. It also has a parent portal for hint and tip videos to enable you to consolidate learning at home - more information will follow. We also purchased almost 800 books which are fully decodable and will benefit all of our children in the school. A special thank you to our PTA who helped to fund this scheme - you would not believe how expensive they are!

Please continue to read all ParentMails sent out via the office. We have sent some information about Chicken Pox as we have had several cases in the school. Have a lovely weekend and keep safe this evening if you are celebrating Bonfire night.

BoShea
Mr O'Shea



DIARY DATES

- Sign Home School Agreement online 05/11
- Year 1 Parents cheese and wine evening 11/11
- PTA Hot Chocolate sale 12/11

Join us



www.crawleyridge.co.uk



COMING SOON



a little more...

FOREST SCHOOL

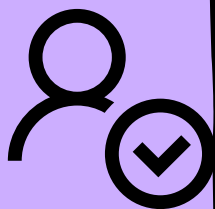
Reminder: On your child's forest school days they must come into school with a pair of wellies (not trainers), along with their normal school shoes to change back into. Dates for forest school can be found on our website.



ATTENDANCE

Children who attend school regularly are given the very best opportunity to benefit from the learning in school. To this end we will do all we can to encourage parents/carers to ensure that the children in their care achieve maximum possible attendance and that any problems which prevent full attendance are identified and acted on promptly. It is the parents' responsibility to ensure that their child attends school regularly.

Our attendance policy and additional information regarding school start times and registration can be found on our website. Click the symbol to the right to access this webpage.

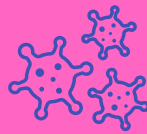


PTA

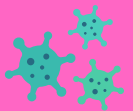


Christmas cards will be going out to parents today and Monday. These are cards the children created at school with their teacher and it has now been scanned, professionally printed and turned into a quality A6 sized Christmas card. The design can also be turned into traditional gift tags, a mug, tea towel, wrapping paper or bag.

If you would like to purchase a pack of cards or other items, please order and pay via the portal: www.pta-events.co.uk/cris



NHS



Your child should not come into school if they have any of the following symptoms:



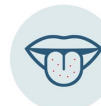
HIGH
TEMPERATURE



NEW
PERSISTENT
COUGH



LOSS OF
SMELL



LOSS OF
TASTE

In Surrey there has been an increase of 63% in positive COVID cases. If you are in any doubt about your child's health including a cold, vomiting, diarrhoea and being 'under the weather' we recommend seeking a PCR test (at a testing centre). Tests are readily available at walk in and drive in centres with results turning around within 12/24 hours. These are always free of charge. We strongly encourage all families to regularly test (twice weekly) the whole family including young children, as there have been many cases in Surrey of children and adults being positive with COVID without any symptoms whatsoever.

**BOOK A PCR
TEST**

**ORDER LATERAL
FLOW TESTS**

CLICK HERE

CLICK HERE

Join us



www.crawleyridge.co.uk



COMING SOON